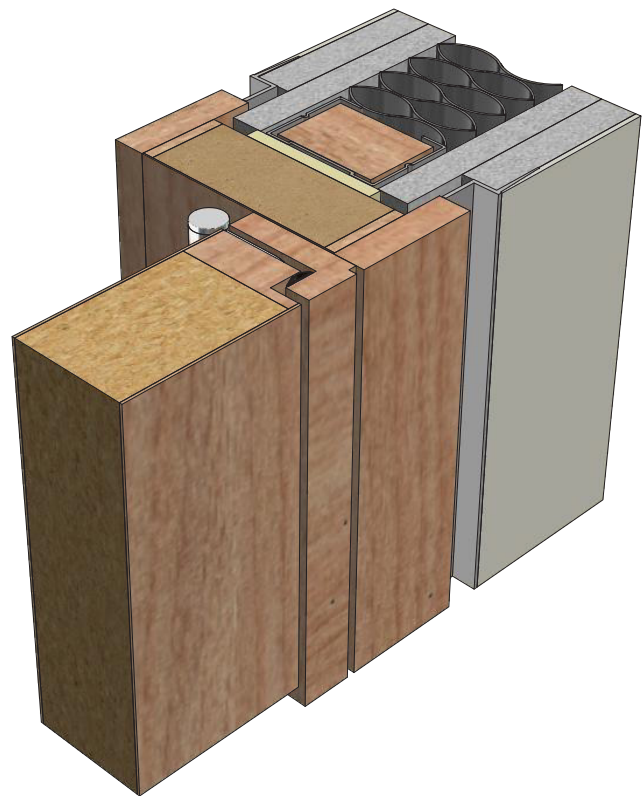


# DFM1044PR/PB/IA NFR

## 4-PART REBATED SHADOW-GAP MDF DOORFRAME

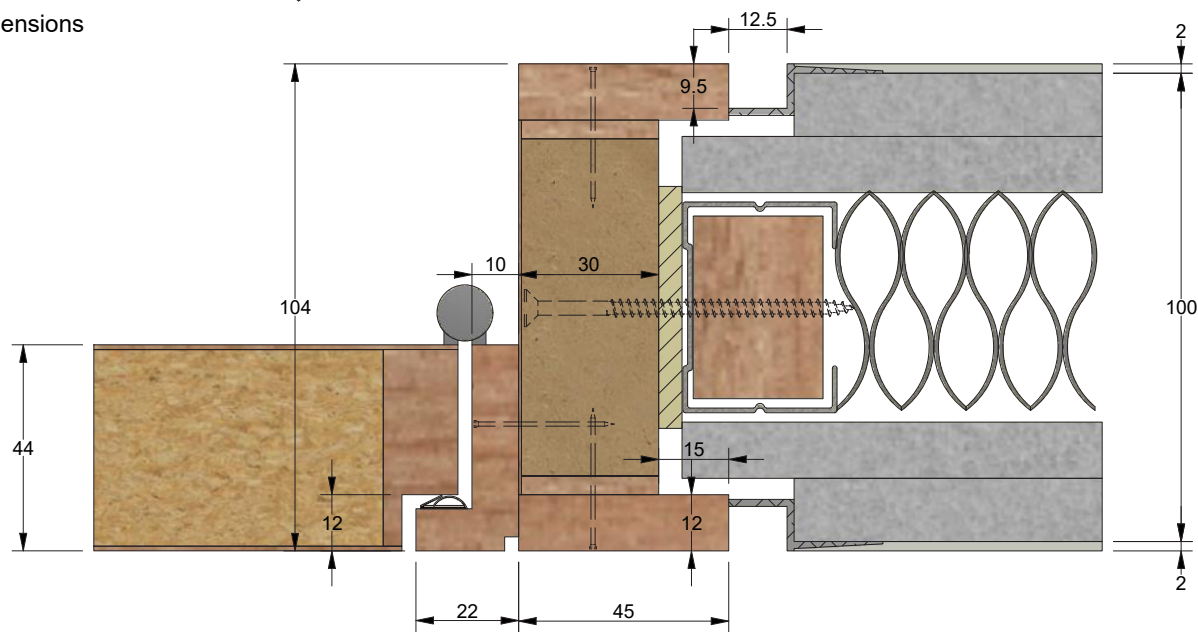
Isometric




### Suggested Build Method

Walls double plaster-boarded up to structure opening.  
Frame installed with approximately 5mm packing zones all round.  
Site to router outer plasterboard for Edge trim.

Dimensions






### Specification

Door:	Timber Particle Board
Liner:	MDF, veneer face, solid timber edge lip
Stop/Architrave:	Solid Timber
	Fixing Packer

Title	4-Part Rebated Shadow-gap MDF Doorframe		
Code	DFM1044PR/PB/IA NFR		
Sheet	1 of 2	Date	23/04/2019
Issue	1	Dwg No	FZD5071/1

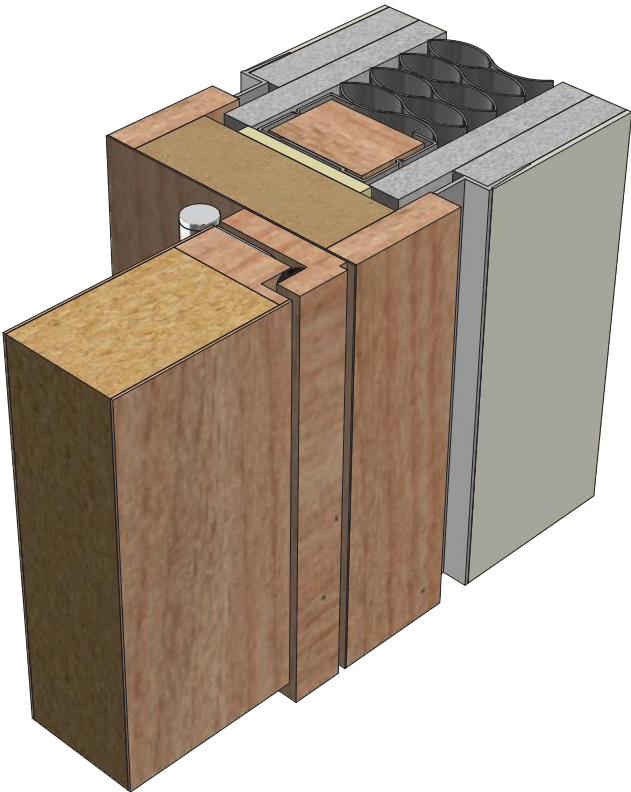


 [forza-doors.com](http://forza-doors.com)  
 01403 711 126  
 [sales@forza-doors.com](mailto:sales@forza-doors.com)

# DFM1042PR/PB/IA NFR

## 2-PART REBATED SHADOW-GAP MDF DOORFRAME

Isometric



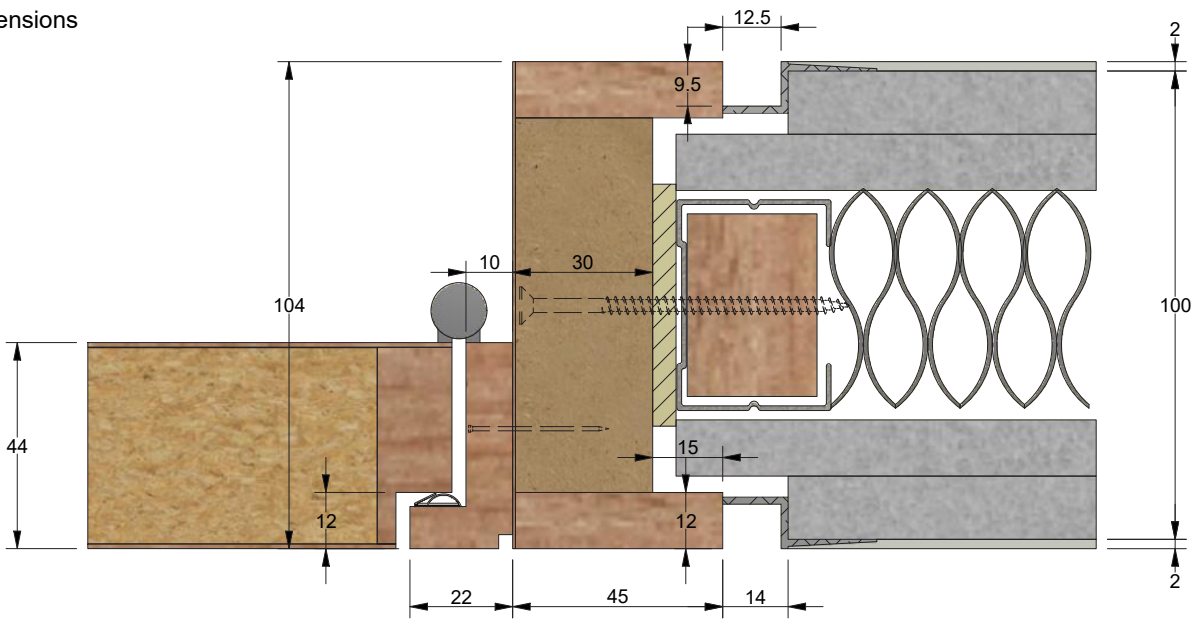
Suggested Build Method

Walls double plaster-boarded up to structure opening.


Frame installed with approximately 5mm packing zones all round.

Site to router outer plasterboard for Edge trim.

Dimensions





Specification


Door:	Timber Particle Board
Liner:	MDF, veneer face, solid timber edge lip
Stop/Architrave:	Solid Timber
	Fixing Packer

Title	2-Part Rebated Shadow-gap MDF Doorframe		
Code	DFM1042PR/PB/IA NFR		
Sheet	2 of 2	Date	24/04/2019
Issue	1	Dwg No	FZD5071



 [forza-doors.com](https://forza-doors.com)

 01403 711 126

 [sales@forza-doors.com](mailto:sales@forza-doors.com)