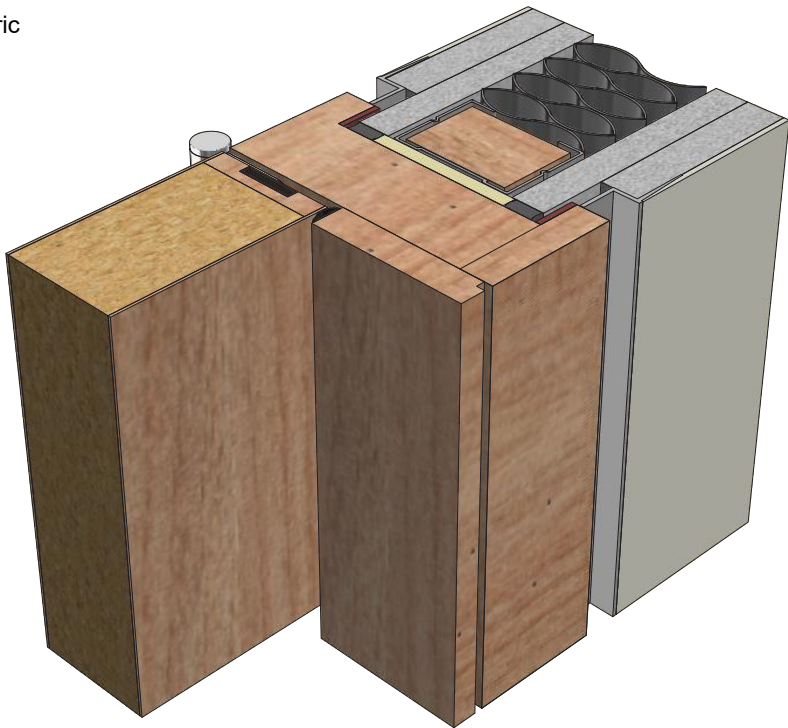


DFT1043PA FD30

3-PART SHADOW-GAP TIMBER DOORFRAME

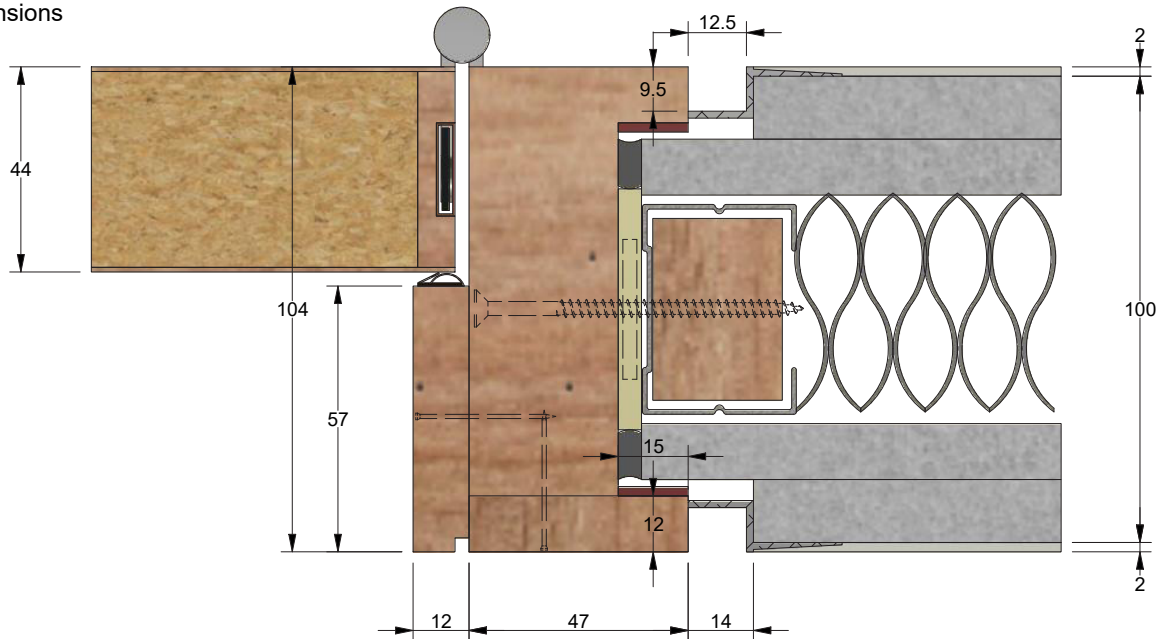
Isometric



Suggested Build Method

- Walls double plaster-boarded up to structure opening.
- Frame installed with approximately 5mm packing zones all round.
- Packing zone to include Mineral wool and Intumescent sealant
- Intumescent sealant specific "Mann McGowan Pyromas" tested FD30 without Architraves.
- Site to router outer plasterboard for Edge trim.
- Specific Gyproc BGM106 (Max 10mm deep reveal)
- Site to fix supplied 15 x 2 Intumescent seal.

Dimensions



Specification

Door:	Timber Particle Board
Liner:	Solid Timber
Stop/Architrave:	Solid Timber
	Mineral wool
	Intumescent mastic Pyromas

	Fixing Packer
	20x4mm Intumescent
	15x2mm Interdens Intumescent

Title	3-Part Shadow-gap Timber Doorframe		
Code	DFT1043PA FD30		
Sheet	1 of 2	Date	03/12/2018
Issue	1	Dwg No	FZD0920/1

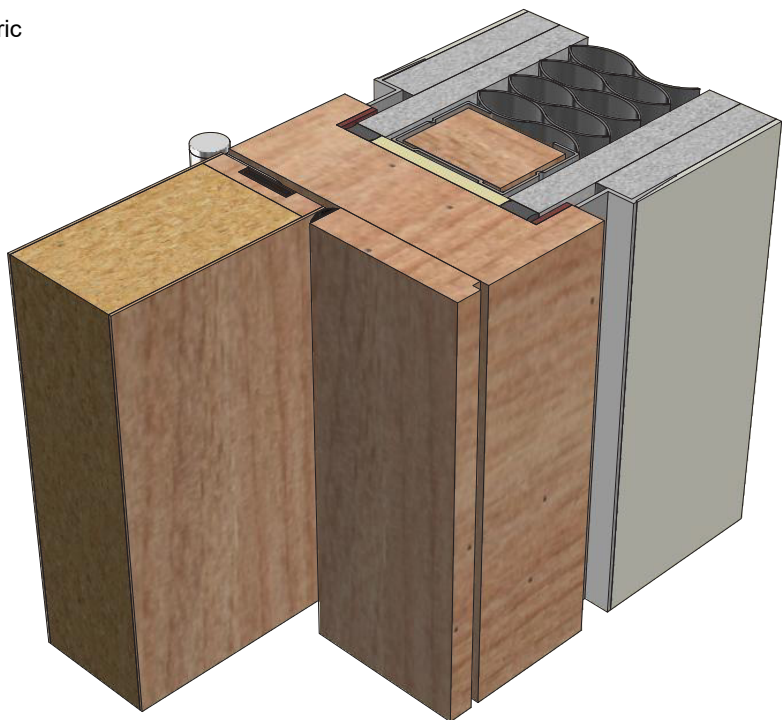


forza-doors.com
01403 711 126
info@forza-doors.com

DFT1042PA FD30

2-PART SHADOW-GAP TIMBER DOORFRAME

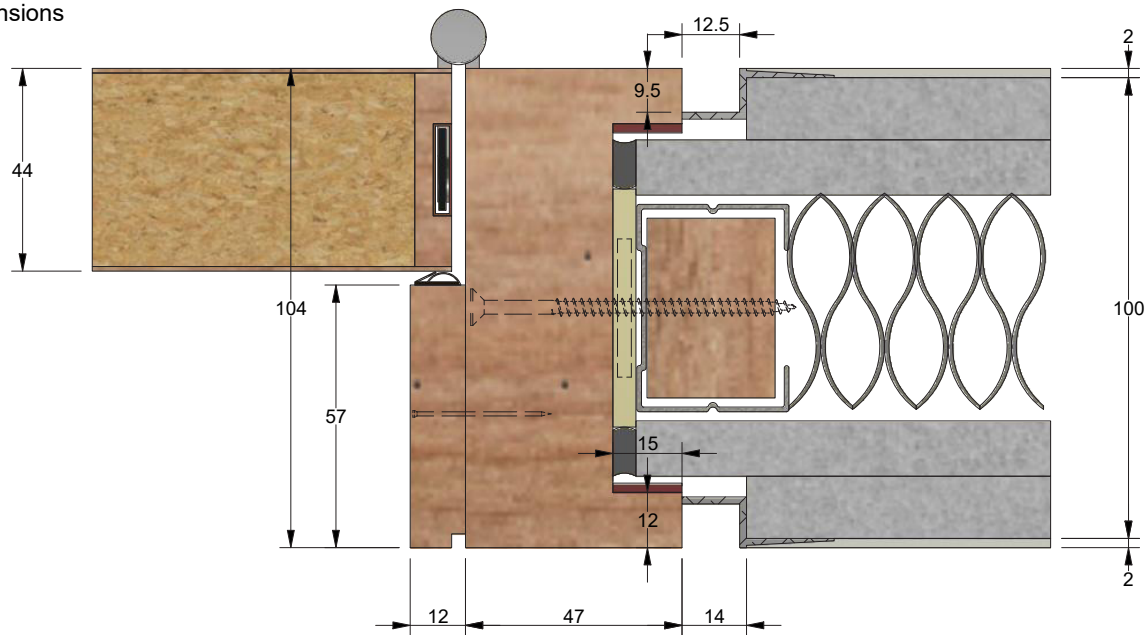
Isometric



Suggested Build Method

- Walls double plaster-boarded up to structure opening.
- Frame installed with approximately 5mm packing zones all round.
- Packing zone to include Mineral wool and Intumescent sealant.
- Intumescent sealant specific "Mann McGowan Pyromas" tested FD30 without Architraves.
- Site to router outer plasterboard for Edge trim.
- Specific Gyproc BGM106 (Max 10mm deep reveal)
- Site to fix supplied 15 x 2 Intumescent seal.

Dimensions



Specification

- Door: Timber Particle Board
- Liner: Solid Timber
- Stop/Architrave: Solid Timber
- Mineral wool
- Intumescent mastic Pyromas

- Fixing Packer
- 20x4mm Intumescent
- 15x2mm Interdens Intumescent

- Title: 2-Part Shadow-gap Timber Doorframe
- Code: DFT1042PA FD30
- Sheet: 2 of 2
- Date: 03/12/2018
- Issue: 1
- Dwg No: FZD0920



forza-doors.com

01403 711 126

info@forza-doors.com