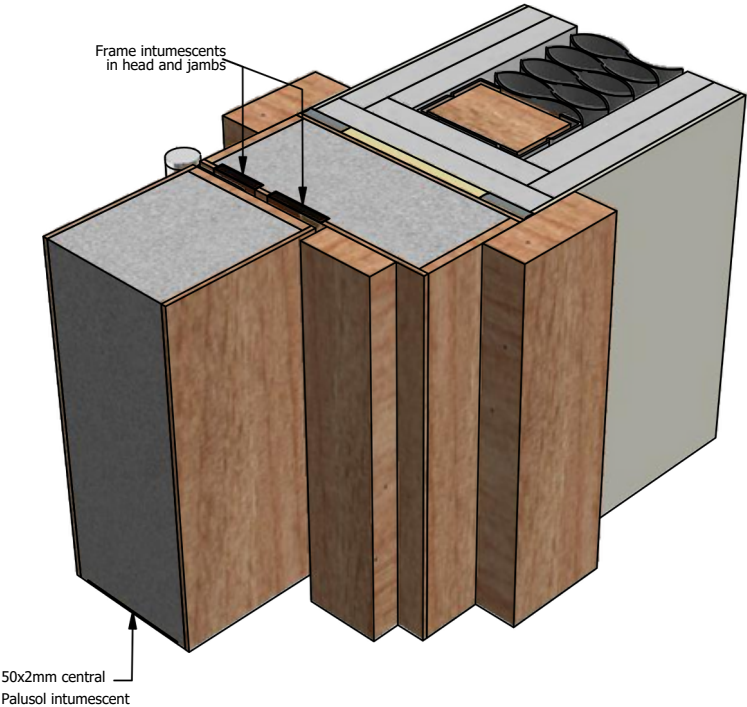


# 4-Part Composite Doorframe

DFC1044P

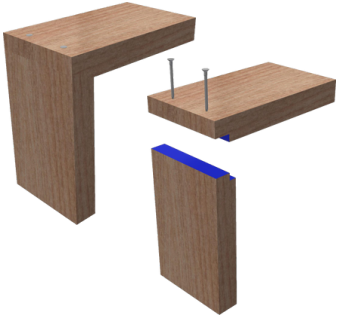
# FD120 (FCW)

## Isometric



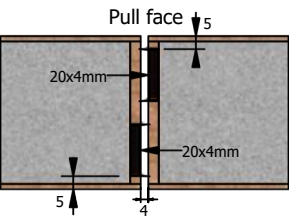
## Head / Jamb Joint

- Flat Half-Lap Joint

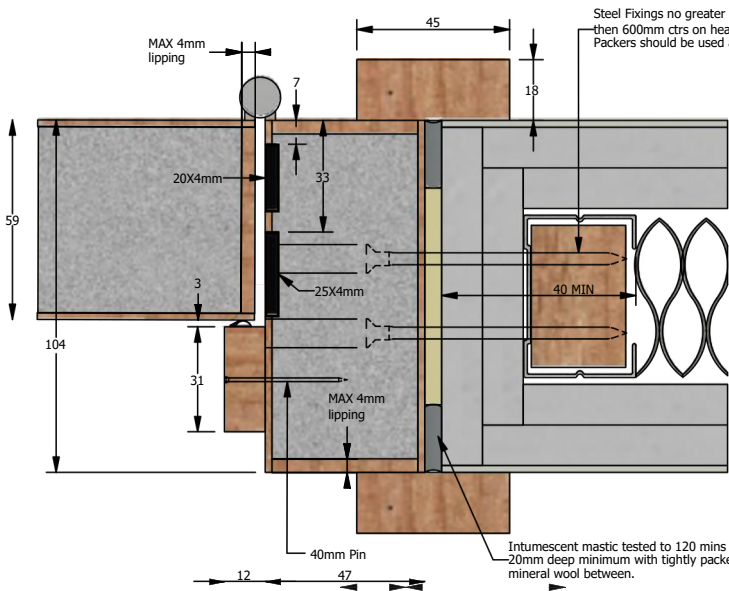


## Double Leaf

In-active Leaf Active Leaf

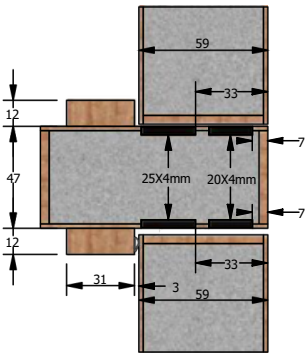


## Dimensions (Jambs and Head)



## Over-panel Transom

Maximum 1000mm height



Transom to be side fixed through Stiles



forza-doors.com  
01403 711 126  
info@forza-doors.com

TITLE	4-Part Composite Doorframe
CODE	DFC1044P FD120 (FCW)
SHEET	1 of 1
DATE	15/02/2024
ISSUE	7
DWG No.	FZD0477

DOOR	FCW120
LINER	FCW120, Max. 4mm solid timber edge lippings
STOP/ARCHITRAVE	Solid Timber
FINISH	Precatalyst Lacquer
LIPPING	Solid Timber - Finish max. 3mm edge lippings
SEALS	25x4mm, 20x4mm, 50x2mm, ST1009