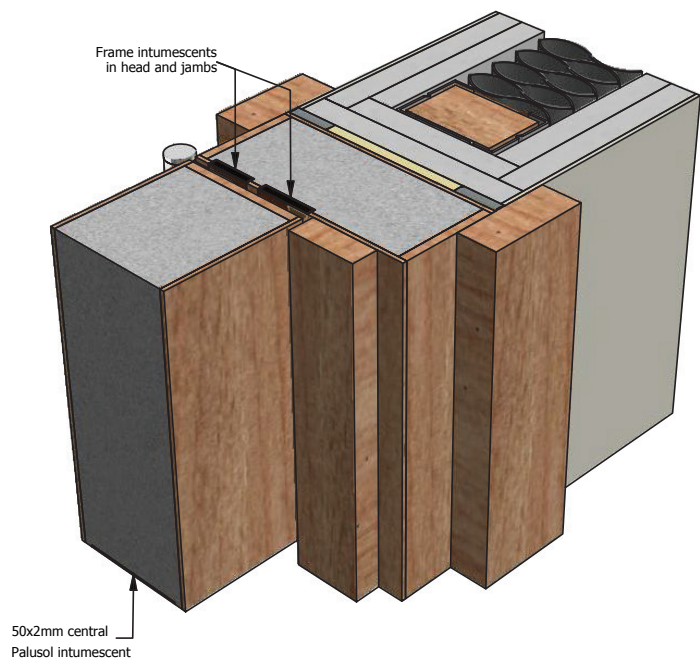


4-Part Composite Door Frame FD90 (FCW)

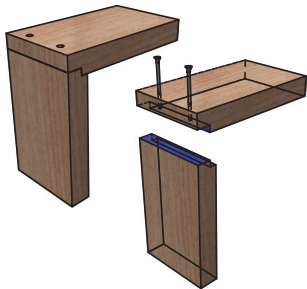
DFC1044P

Isometric



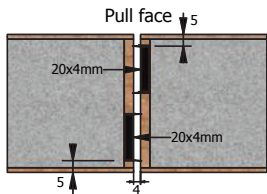
Head / Jamb Joint

- Flat Half-Lap Joint

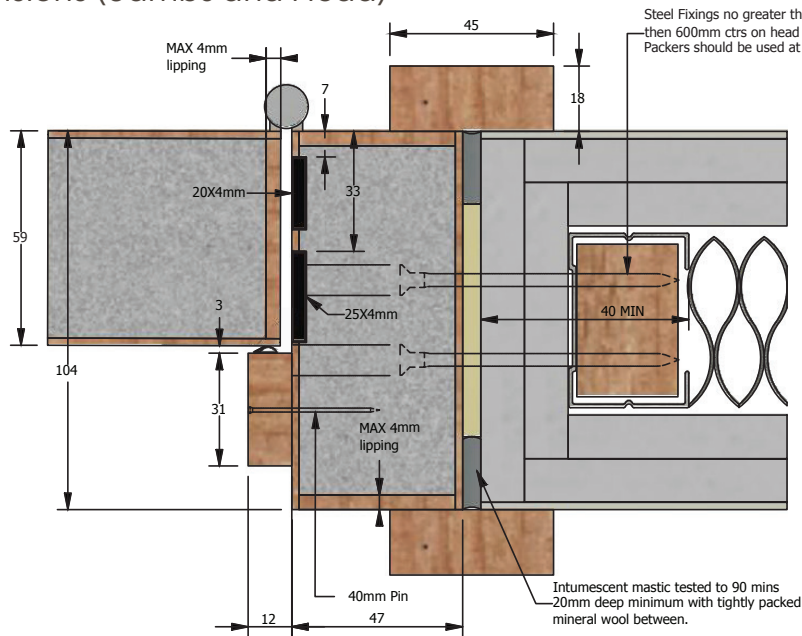


Double Leaf

In-active Leaf Active Leaf

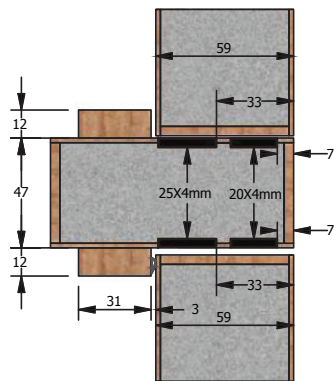


Dimensions (Jambs and Head)



Over-Panel Transom

Maximum 1000mm height



Transom to be side fixed through Stiles



forza-doors.com
01403 711 126
info@forza-doors.com

TITLE	4-Part Composite Door Frame
CODE	DFC1044P FD90 (FCW)
SHEET	1 of 1
DATE	15/02/2024
ISSUE	7
DWG No.	FZD0476

DOOR	FCW90
LINER	FCW90, Max. 4mm solid timber edge lippings
STOP/ARCHITRAVE	Solid Timber
FINISH	Precatalyst Lacquer
LIPPING	Solid Timber - Finish max. 4mm edge lippings
SEALS	25x4mm, 20x4mm, 50x2mm, ST1009