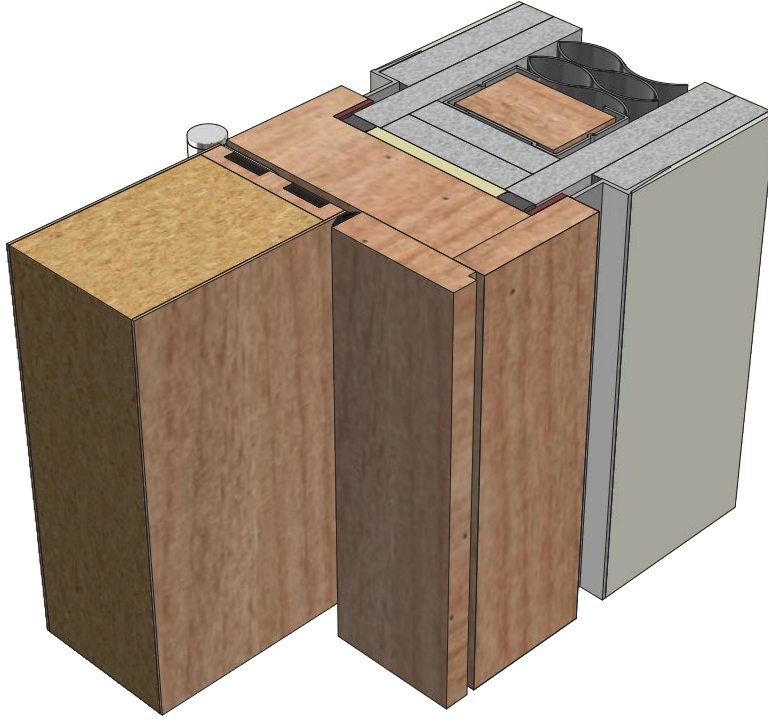


DFT1042PA FD60

2-PART SHADOW-GAP TIMBER DOORFRAME

Isometric



Suggested Build Method

Walls double plaster-boarded up to structure opening.

Frame installed with approximately
5mm packing zones all round.

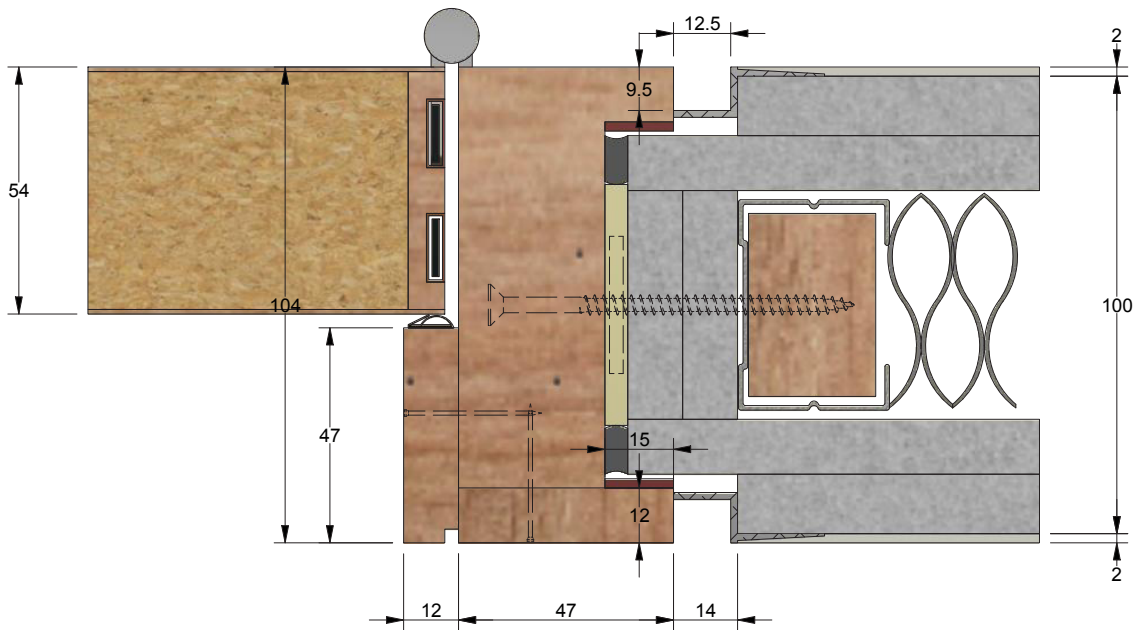
Packing zone to include Mineral wool
and Intumescent sealant

Site to router outer plasterboard for Edge trim.


Specific Gyproc BGM106
(Max 10mm deep reveal)

Site to fix supplied 15 x 2 Intumescent seal.

Dimensions



 forza-doors.com

 01403 711 126

✉ tech@forza-doors.com

TITLE	2-Part Shadow-gap Timber
CODE	DFT1042PA FD60

SHEET 2 of 2

DATE 10/12/2018

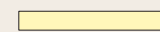
ISSUE 1

DWG No. FZD0940

DOOR

LINER

STOP/ARCHITRAVE



Timber Particle Board

Solid Timber

Hardwood / Softwood

Fixing Packer

15x4mm Intumescent

15x2mm Interdens Intumescent

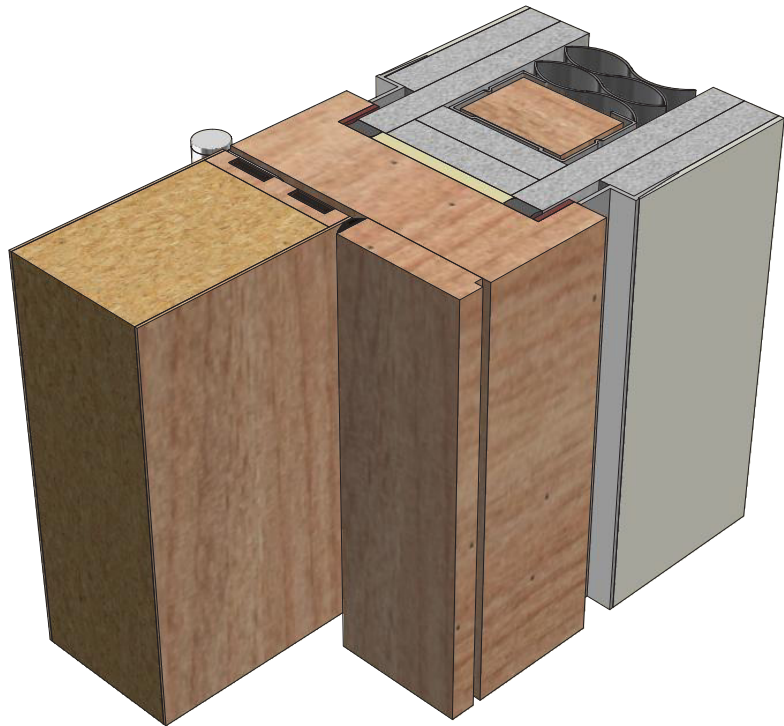
Intumescent mastic Pyromas

Mineral wool

DFT1042PA FD60

2-PART SHADOW-GAP TIMBER DOORFRAME

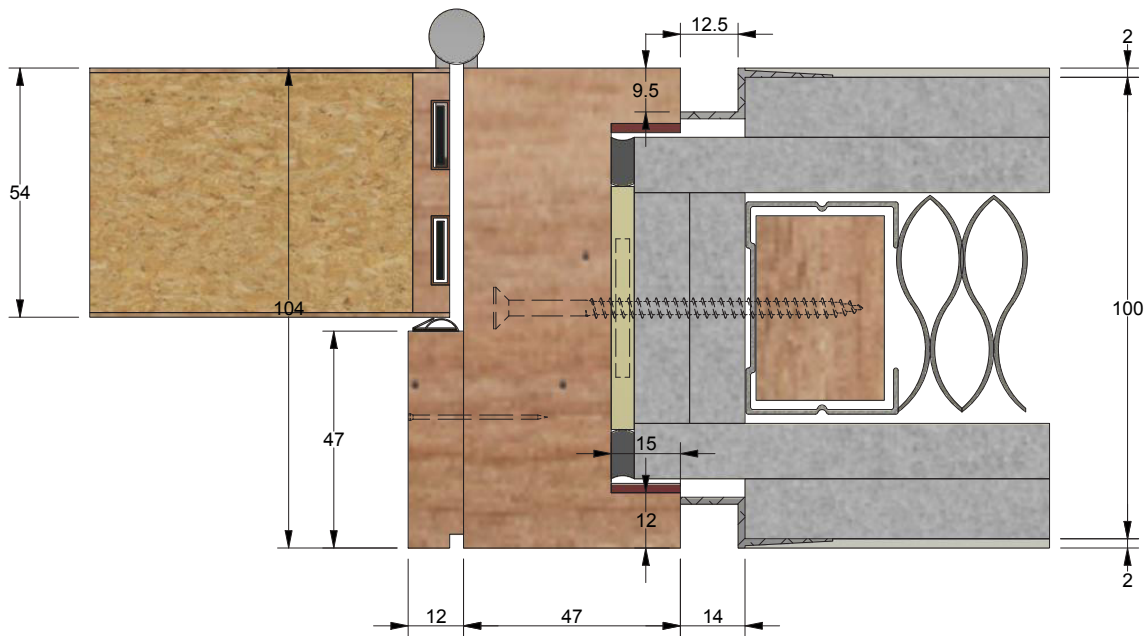
Isometric



Suggested Build Method

- Walls double plaster-boarded up to structure opening.
- Frame installed with approximately 5mm packing zones all round.
- Packing zone to include Mineral wool and Intumescent sealant
- Site to router outer plasterboard for Edge trim.
- Specific Gyproc BGM106 (Max 10mm deep reveal)
- Site to fix supplied 15 x 2 Intumescent seal.

Dimensions



forza-doors.com
01403 711 126
tech@forza-doors.com

TITLE	2-Part Shadow-gap Timber
CODE	DFT1042PA FD60
SHEET	2 of 2
DATE	10/12/2018
ISSUE	1
DWG No.	FZD0940/1

DOOR	Timber Particle Board
LINER	Solid Timber
STOP/ARCHITRAVE	Hardwood / Softwood
	Fixing Packer
	15x4mm Intumescent
	15x2mm Interdens Intumescent
	Intumescent mastic Pyromas
	Mineral wool