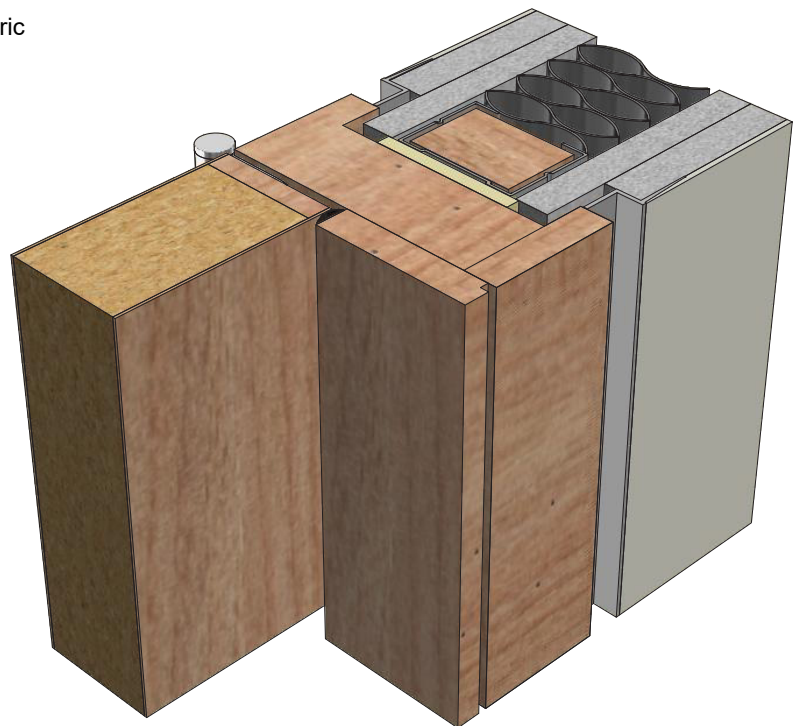


# DFT1043PA NFR

## 3-PART SHADOW-GAP TIMBER DOORFRAME

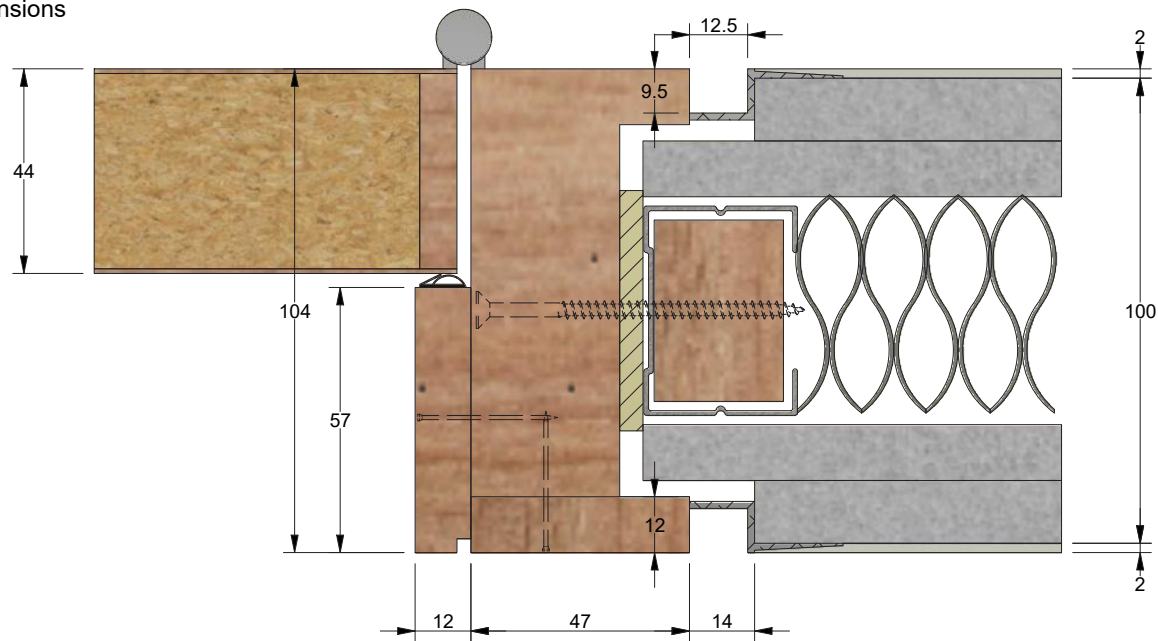
Isometric



Suggested Build Method

Walls double plaster-boarded up to structure opening.  
Frame installed with approximately 5mm packing zones all round.  
Site to router outer plasterboard for Edge trim.

Dimensions






Specification

Door: Timber Particle Board  
Liner: Solid Timber  
Stop/Architrave: Solid Timber  
 Fixing Packer

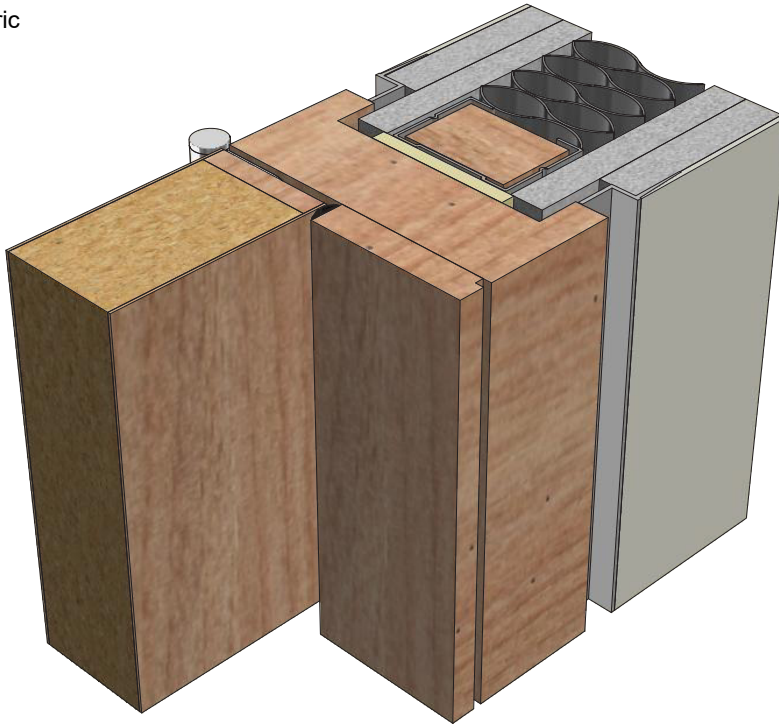
Title 3-Part Shadow-gap Timber Doorframe  
Code DFT1043PA NFR  
Sheet 1 of 2 Date 23/04/2019  
Issue 1 Dwg No FZD5061/1



 [forza-doors.com](http://forza-doors.com)  
 01403 711 126  
 [sales@forza-doors.com](mailto:sales@forza-doors.com)

## 2-PART SHADOW-GAP TIMBER DOORFRAME

Isometric



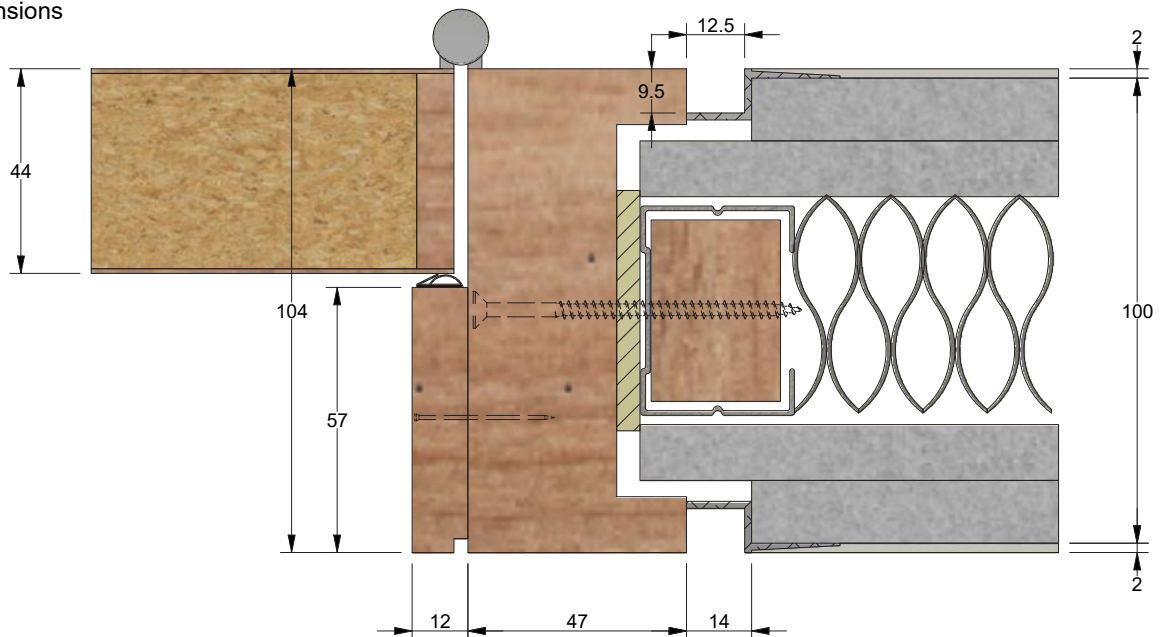
### Suggested Build Method

Walls double plaster-boarded up to structure opening.


Frame installed with approximately  
5mm packing zones all round.

Site to router outer plasterboard for Edge trim.

## Dimensions



## Specification

Door:	Timber Particle Board
Liner:	Solid Timber
Stop/Architrave:	Solid Timber
	Fixing Packer

Title	2-Part Shadow-gap Timber Doorframe		
Code	DFT1042PA NFR		
Sheet	2 of 2	Date	23/04/2019
Issue	1	Dwg No	FZD5061



 [forza-doors.com](http://forza-doors.com)

 01403 711 126

✉ [sales@forza-doors.com](mailto:sales@forza-doors.com)