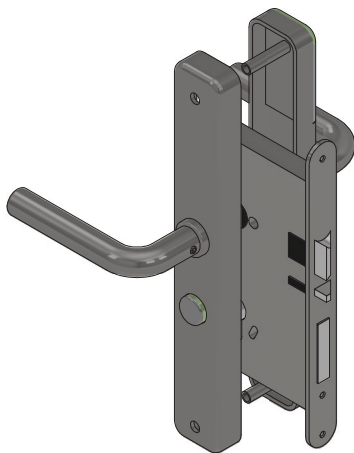


AEMSF300 Mortice Shear Lock

FD30

Shear Lock

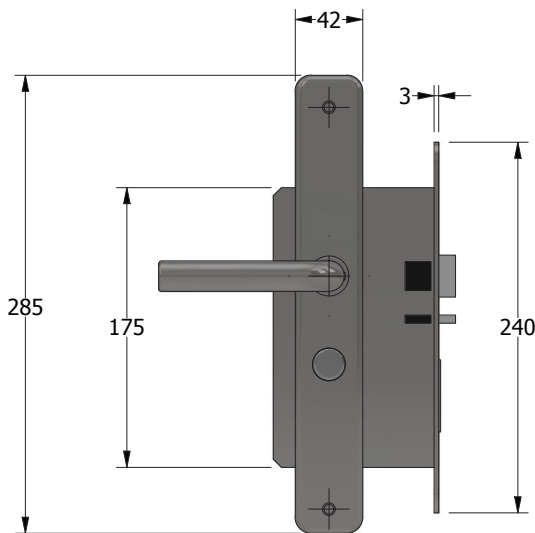
Isometric



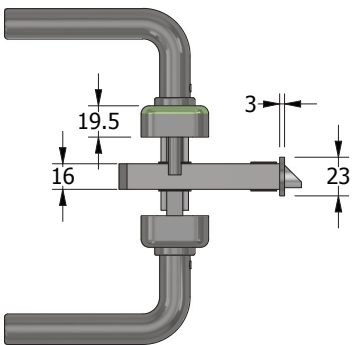
Perspective



Plan



Front



forza-doors.com
01403 711 126
info@forza-doors.com

TITLE	AEMSF300 Mortice Shear Lock
CODE	Shear Lock
SHEET	1 of 2
DATE	29/01/2024
ISSUE	1
DWG No.	FZD5546

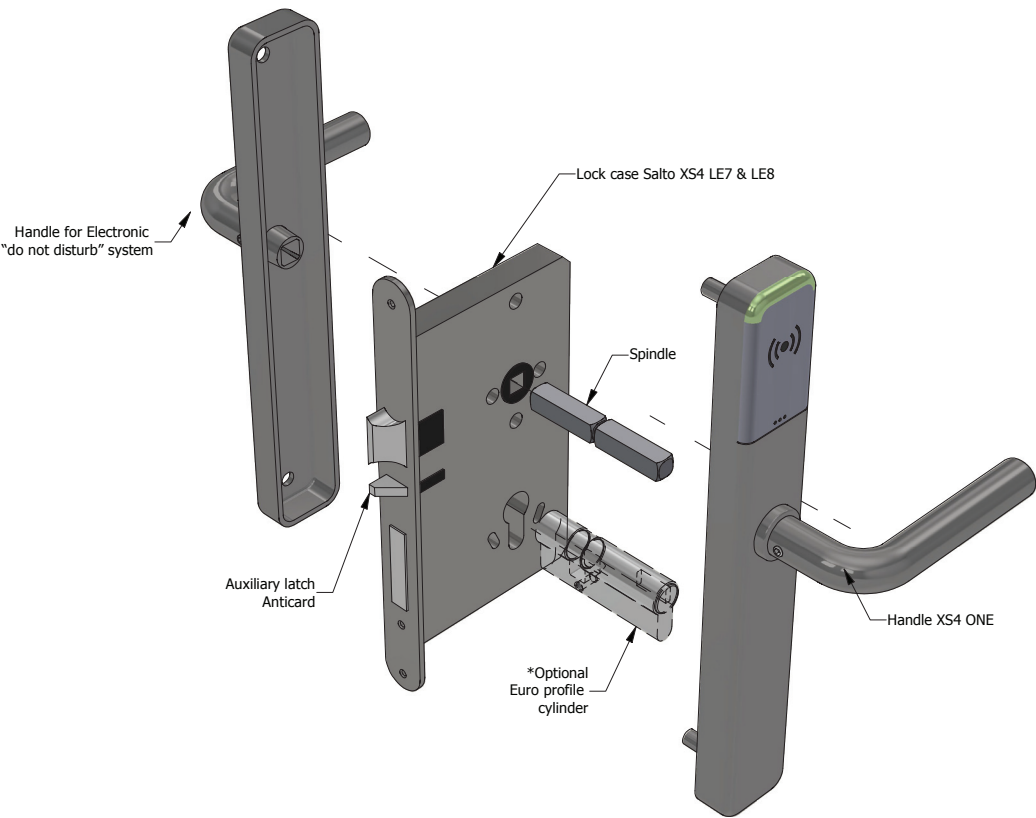
DOOR	Timber Particle Board 44 & 54mm FCE; FCH; FCS
	Lock unit covered with 2mm thick intumescent within the door leaf and frame head

AEMSF300 Mortice Shear Lock

Shear Lock

FD30

Exploded View



*Lock Details For Illustrative Purpose Only.



FORZA

DOORS

 forza-doors.com

 01403 711 126

 info@forza-doors.com

TITLE	AEMSF300 Mortice Shear Lock
CODE	Shear Lock
SHEET	2 of 2
DATE	29/01/2024
ISSUE	1
DWG No.	FZD5546

DOOR	Timber Particle Board 44 & 54mm FCE; FCH; FCS
	Lock unit covered with 2mm thick intumescent within the door leaf and frame head